

**F-SERIES COMPACT WHEEL LOADERS
21F | 121F | 221F | 321F**

CASE
CONSTRUCTION



**PERFECT IN
EVERY MISSION**

www.casece.com

**EXPERTS FOR THE REAL WORLD
SINCE 1842**

MAIN REASONS TO CHOOSE THE F-SERIES



LOW EMISSIONS

EU Stage IIIB / Tier 4 final compliant

- No particulate filter
- No fuel injectors in the exhaust



HIGH PAYLOAD

- From 1,9 t up to 2,5 t tipping load
- Auto-Ride Control optimizes bucket retention.



FAST ATTACHMENT CHANGE OVER

- Hydraulic coupler controlled from the all-in-one joystick
- Depressurized push-pull connectors



FAST TRAVELLING

- Engage Turtle/Rabbit speed under load
- 221F and 321F are available in High Travel Speed (HTS) version: 33 km/h





SHORT TURNING RADIUS

Makes your day-to-day job easier when working in tight spaces.



PRO COVER PROTECTION PLAN 3 YEARS / 3,000 HOURS

ProCover is designed to help keep your equipment working well beyond the manufacturer's base warranty period while taking away the concerns of the cost and inconvenience of mechanical failure.



COMFORT CAB

- 10 air vents ensure perfect climate control in all seasons
- Control all functions from the joystick



HIGH VERSATILITY

Easy asphalt planing, snow blowing, brooming, compacting and much more with:

- 1 or 2 auxiliary hydraulic circuit
- Creep speed: max flow at constant low speed
- High flow option on 221F and 321F
- The wide offering of Case attachments



AUTO-RIDE CONTROL

- Ride Control, activated only when needed, over 7 km/h prevents arm bouncing.



PERFECT IN EVERY MISSION



GREATER STABILITY

Oscillating rear axle

The combination of the articulated joint and the rear oscillating axle reduces maximum cab oscillation by 50% or more.



MILLIMETRIC CONTROL

Inch and brake pedal

It progressively disengages the transmission during the decelerating phase and progressively engages the brakes.



LOW CAB PROFILE

Take the shortest path

No waste of time with the reduced cab height:

- 21F and 121F: 2.46 m
- 221F: 2.63 m
- 321F: 2.68 m

You can always take the shortest path from point A to point B - in indoor jobs or when transporting on a truck.



SUPERIOR DUMP HEIGHT

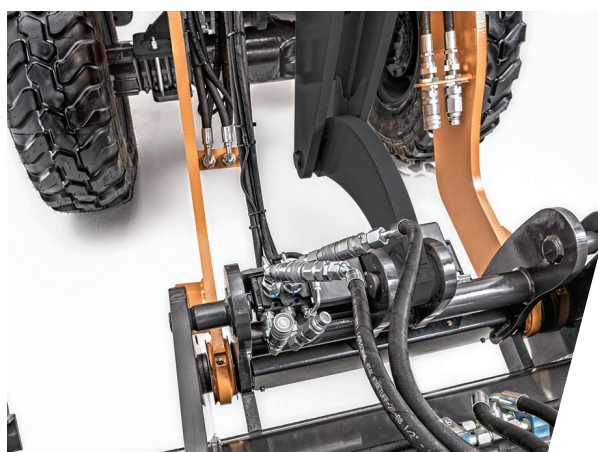
Centred and higher loading

The superior hinge pin height and the Case “banana” arms make it easy to load at the centre of the trailer without touching the edge with the arms.



HIGH PAYLOAD, HANDLE HEAVIER PALLETS

PERFECT IN EVERY MISSION



FAST ATTACHMENT CHANGE OVER

Plug and unplug your attachment in a few seconds

With the depressurized push-pull connectors you will never need hand tools to swap your attachments.

Front electrical socket

For multi-functioning or special attachments

Standard flow or high flow

- Standard Flow (Max pressure: 230 bar):
 - 21F-121F: 67 lpm @ 2500 rpm
 - 221F-321F: 85 lpm @ 2500 rpm
- The High Flow package is available on 221F-321F:
 - 130 lpm @ 2500 rpm

High Flow option always comes as part of a package including Creep Speed, Front electrical socket and Return Depressurized Drain.



COMFORT CAB WORK AROUND THE CLOCK

Adjustable wrist rest

ALL-IN-ONE Joystick

10 air vents

**Tilting adjustment
of the steering wheel**



SUPERIOR CAB SAFETY

Plug and unplug your attachment in a few seconds

Designed to protect the operator in case the machine rolls over or a 227 kg rock falls from 5 meters height on the roof.



EASY CAB ACCESS

Easy entrance

With low cab floor and wide steps.

If you want even more

The Deluxe Option includes an additional storage compartment under you left hand, storage spaces around the seat and height adjustment of the steering wheel.



PRO COVER PROTECTION PLAN 3 YEARS / 3,000 HOURS

When the unexpected occurs, you need to know your equipment is protected.

We understand the importance of your machinery being in good working order and additionally to the STANDARD PROTECTION PLAN we offer you to purchase supplementary years/hours to meet your needs.

PROCOVER
Protection Plan





F-SERIES

COMPACT WHEEL LOADERS

SPECIFICATIONS

TRANSMISSION	
Hydrostatic 4-wheel Drive Transmission	Travel speed is proportional to the pressure on the throttle.
Speed with standard tyres	
Operating speed range	0–5 km/h
Travel speed range	0–20 km/h
Optional High Travel Speed	33 km/h (upon request on 221F and 321F)
“Inch & Brake” Pedal	
Power transfer from the transmission to the bucket hydraulics at constant rpm. Optimum speed control at low speed.	
Optional Creep Speed upon request on 221F and 321F):	
Set and adjust travel speed in the 1-5 km/h range, adjust engine rpm for hand-free asphalt planing, snow blowing, brooming.	
DIFFERENTIAL CHOICE	
Limited slip front & rear (all models) or Front & rear open diff (21F & 121F) or open with 100% lock on front and rear differentials (221F & 321F)	
Type - Oscillation	
TYRES	
Standard	
21F/121F	12.5-18
221F	12.5-20
321F	14.5-20
BRAKES	
Standard brakes	disc brake. Located in hubs for 221F/321F, centre mounted for 21F/121F
Parking brakes	disc brake on transmission shaft

EASY PALLET LOADING

Linkage: Mechanical self-levelling on XT and Z-bar.

STEERING	
Fully hydraulic center pivot steering. Front and rear wheels follow the same track. Steering angle of 40° to each side. Emergency steering function.	
ELECTRICAL SYSTEM	
Voltage	12 V
Battery	95 A.h
Alternator	120 A.h
CAPACITIES	
Diesel	87 l
Engine oil	7 l
Cooling liquid	16 l
Total hydraulic oil	57 l
Front axle	9 l
Rear axle	12 l
HYDRAULICS	
Gear pump for loading and steering hydraulics Priority valve favouring steering hydraulics 3rd or 4th functions are proportionally controlled by the All-in-one Joystick with, Flow memory button as standard.	
Standard Flow	
21F-121F	67 lpm @ 2500 rpm
221F-321F	85 lpm @ 2500 rpm
High Flow package available upon request on 221F-321F	
130 lpm @ 2500 rpm	
NOISE AND VIBRATIONS	
External - Guaranteed acoustic power-level LWA (1)	101 dB
Cab interior - Sound Pressure Level (2) 21F-121F:	71 dB
221F-321F:	72 dB
Hand- / arm- / body -vibration (3)	< 2.5 / 0.5 m/s ²
(1) According to 2000/14/EG & annexes. (2) According to ISO 6396. (3) According to ISO 8041	
EMISSIONS	
Nox + HC	4.5 g/kW/h
CO	0.10 g/kW/h
PM	0.02 g/kW/h

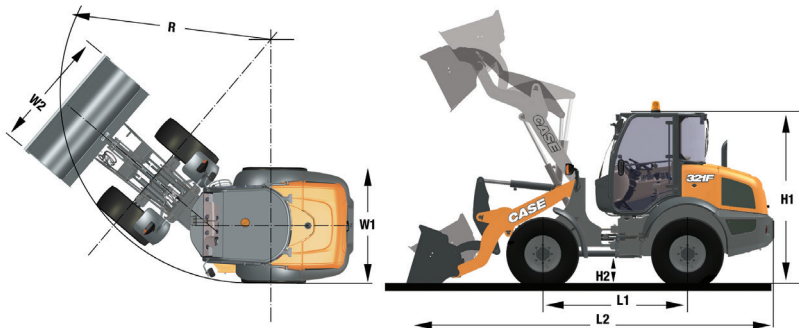


Z-BAR is the most versatile linkage type. It offers more breakout force thanks to the 2 lifting cylinders and a higher dump height.



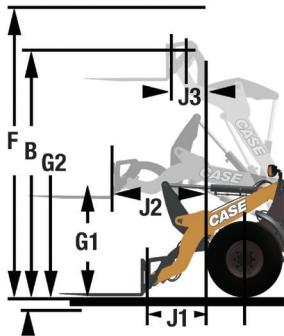
XT is the best linkage for pallet handling. Visibility on the pallet is the best with one lifting cylinder only and payload is optimum

GENERAL DIMENSIONS



	21F	121F	221F	321F
H1	2.46 m	2.46 m	2.63 m	2.68 m
H2	45 cm	45 cm	44 cm	49 cm
W1	1.74 m	1.74 m	1.80 m	1.86 m
W2	1.90 m	2.05 m	2.05 m	2.10 m
L1	2.08 m	2.08 m	2.22 m	2.23 m
R	3.72 m	3.72 m	3.99 m	3.99 m

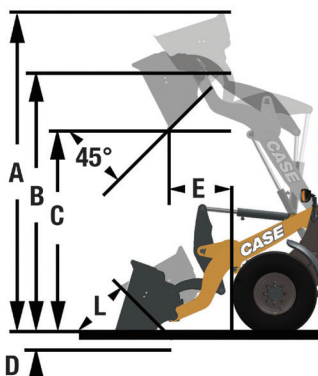
SPECIFICATIONS WITH FORKS



	21F		121F		221F	321F
	Z BAR	XT	Z BAR	XT	Z BAR	Z BAR
Tipping load straight	2.8 t	3.0 t	3.0 t	3.2 t	3.1 t	3.6 t
Tipping load at full turn (40°)	2.4 t	2.6 t	2.6 t	2.8 t	2.7 t	3.0 t
Payload @80%*	1.9 t	2.1 t	2.1 t	2.2 t	2.2 t	2.5 t
F Max overall height	3.48 m	3.63 m	3.53 m	3.65 m	3.63 m	3.73 m
B Hinge pin height	3.14 m	3.11 m	3.18 m	3.13 m	3.29 m	3.40 m
G2 Max fork height	2.90 m	2.96 m	2.95 m	2.97 m	3.08 m	3.19 m
G1 Forks height @ max reach	1.27 m	1.34 m	1.27 m	1.34 m	1.34 m	1.39 m
J1 Reach @ ground level	0.94 m	0.77 m	1.01 m	0.80 m	0.99 m	0.99 cm
J2 Max Reach	1.35 m	1.26 m	1.41 m	1.27 m	1.43 m	1.43 cm
J3 Reach @ max height	0.59 m	0.46 m	0.63 m	0.47 m	0.61 m	0.61 m
Operating weight with forks	5020 kg	4910 kg	5310 kg	5090 kg	5559 kg	6060 kg

* on even ground, according to ISO 8313 and EN 474-3

SPECIFICATIONS WITH BUCKET



	21F		121F		221F	321F
	Z BAR	XT	Z BAR	XT	Z BAR	Z BAR
Bucket Volume (SAE)	0.7-1.0 m3		0.9 -1.1 m3		1.0 - 1.2 m3	1.1 - 1.2 m3
Tipping load straight	3.9 t	3.8 t	4.1 t	4.1 t	4.2 t	4.6 t
Tipping load at full turn (40°)	3.2 t	3.3 t	3.3 t	3.5 t	3.6 t	3.7 t
Payload @50%	1.6 t	1.6 t	1.7 t	1.8 t	1.8 t	1.9 t
Breakout Force	5925 daN	4024 daN	5375 daN	3849 daN	6269 daN	6194 daN
L2 Length with bucket	5.28 m	5.23	5.39	5.33	5.62 m	5.68 m
A Max bucket height	3.14 m	3.94 m	3.18 m	4.09 m	3.29 m	3.40 m
B Hinge pin height	3.14 m	3.11 m	3.18 m	3.13 m	3.29 m	3.40 m
C Dump height @45°	2.49 m	2.34 m	2.52 m	2.35 m	2.60 m	2.69 m
D Dig Depth	7.3 cm	13 m	12 cm	14 m	10 cm	8.4 cm
E Reach at full height	77 cm	71 m	83 cm	74 m	85 m	85 cm
Operating weight (std. bucket)	5115 kg	5015 kg	5423 kg	5208 m	5694 kg	6195 kg
Operating weight (4-in-1 bucket)	5414 kg	5304 kg	5742 kg	5507 kg	6034 kg	6535 kg



PARTS AND SERVICE

Wide network of customer support across the world.

No matter where you work, we're here to support and protect your investment and exceed your expectations. You can count on CASE and your CASE dealer for full-service solutions-productive equipment, expert advice, flexible financing, genuine CASE parts and fast service. We're here to provide you with the ultimate ownership experience.

To locate a CASE dealer or learn more about CASE equipment or customer service, go to <https://www.casece.com/apac/en-sea>.

NOTE: CASE provides specific outfits for various countries and many optional fittings (OPT). The illustrations on this or other leaflets may relate to standard or optional fittings. please consult your CASE dealer for any information in this regard and any possible updating on components. CNH Industrial reserves the right to modify machine specifications without incurring any obligation relating to such changes.