

DIECI



SAMSON

45.8 | 75.10



dieci.com

PERFORMANCE

Vehicle model	SAMSON 45.8	SAMSON 75.10
Maximum capacity	4500 kg (9921 lb)	7500 kg (16535 lb)
Maximum lifting height	7.9 m (25.9 ft)	9.65 m (31.7 ft)
Maximum horizontal extension	4.45 m (14.6 ft)	5.4 m (17.7 ft)
Fork swiveling angle	134°	134°
Pull-out force	5700 daN (12814 lbf)	5700 daN (12814 lbf)
Towing force	7300 daN (16411 lbf)	7300 daN (16411 lbf)
Unladen weight	8800 kg (19401 lb)	12100 kg (26676 lb)
Maximum climb angle	40 %	40 %
Max speed (referred to wheels with maximum permitted diameter)	30 km/h (18.6 mph)	30 km/h (18.6 mph)

BOOM

Vehicle model	SAMSON 45.8	SAMSON 75.10
Getting off the basket	9.8 s	9.9 s
Lifting	13 s	15.1 s
Extension	6.8 s	10.4 s
Retraction	3.8 s	4.1 s
Forward swiveling	3.3 s	4.6 s
Reverse swiveling	2.3 s	2 s

ENGINE

Vehicle model	SAMSON 45.8	SAMSON 75.10
Brand	FPT	FPT
Nominal power	93 kW (125 HP)	93 kW (125 HP)
@rpm	2200 rpm	2200 rpm
Peak power	93 kW (125 HP)	93 kW (125 HP)
@rpm	2200 rpm	2200 rpm
Operation	4-stroke	4-stroke
Injection	Mechanical direct	Mechanical direct
Number and arrangement of cylinders	4, Vertical in line	4, Vertical in line
Displacement	4485 cm³ (274 in³)	4485 cm³ (274 in³)
Consumption	230 g/kWh (378.35 lb/Hp h)	230 g/kWh (378.35 lb/Hp h)
@rpm	2200 rpm	2200 rpm
Emission standards	Stage IIIA/Tier 3	Stage IIIA/Tier 3
Cooling system	Liquid	Liquid
Intake	Turbocharger after-cooler	Turbocharger after-cooler
Air filter	Replaceable cartridge for dry filter	Replaceable cartridge for dry filter

TRANSMISSION

Vehicle model	SAMSON 45.8	SAMSON 75.10
Transmission type	Hydrostatic with variable displacement pump	Hydrostatic with variable displacement pump
Hydraulic motor	Hydrostatic with continuous automatic adjustment	Hydrostatic with continuous automatic adjustment
Reversal	Electro-Hydraulic	Electro-Hydraulic
Inching	With hydraulic pedal for controlled forward movement	With hydraulic pedal for controlled forward movement
Gearbox	Servo-controlled 2-speed	Servo-controlled 2-speed

DIFFERENTIAL AXLES

Vehicle model	SAMSON 45.8	SAMSON 75.10
Type of axles	2 steering, with 4 epicycloidal reduction gears	2 steering, with 4 epicycloidal reduction gears
Type of steering	4 wheels / transversal / 2 wheels	4 wheels / transversal / 2 wheels
Front axle	Rigid (Levelling upon request)	Rigid (Levelling upon request)
Rear axle	Swinging	Swinging
Service braking	Oil bath with servo brake on front and rear axle with double hydraulic system	Oil bath with servo brake on front and rear axle with double hydraulic system
Parking braking	Negative actuation with electrical control	Negative actuation with electrical control

HYDRAULIC SYSTEM

Vehicle model	SAMSON 45.8	SAMSON 75.10
Hydraulic pump type	Gear pump for power steering and movements	Gear pump for power steering and movements
Hydraulic pump capacity	130 l/min (34.3 gal/min)	130 l/min (34.3 gal/min)
Max. operating pressure	25 MPa (3626 psi)	26 MPa (3771 psi)
Distributor control	Proportional 4in1 Joystick	Joystick with deadman button
Distributor type	Hydraulic control distributor-single joystick with proportional controls.	Hydraulic control distributor-single joystick with proportional and simultaneous controls (Flow Sharing). Open center services

FILLING

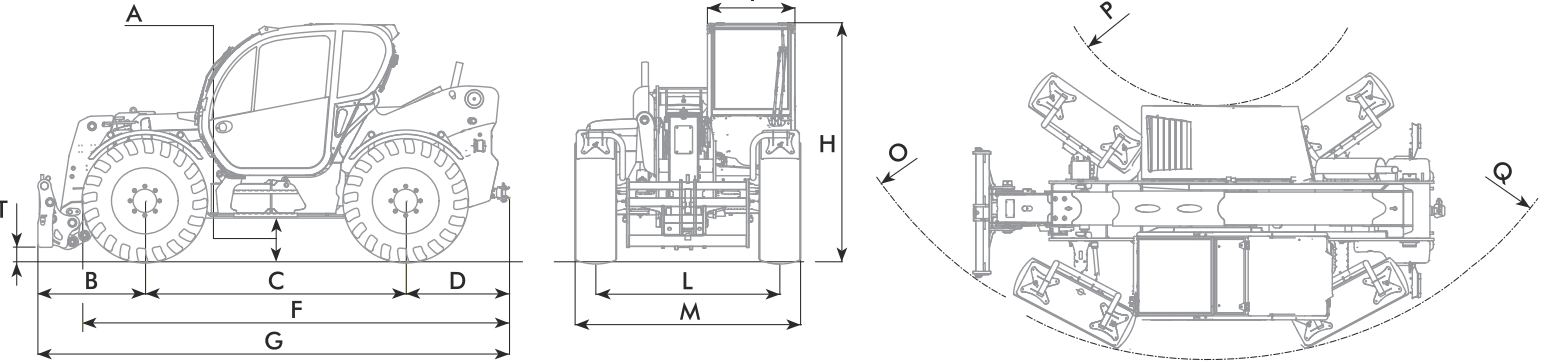
Vehicle model	SAMSON 45.8	SAMSON 75.10
Hydraulic system (total)	155 l (40.95 gal)	160 l (42.27 gal)
Diesel tank	105 l (27.74 gal)	105 l (27.74 gal)

TYRES

Vehicle model	SAMSON 45.8	SAMSON 75.10
Standard tires	400/70x20"	18x22.5"

DIMENSIONS

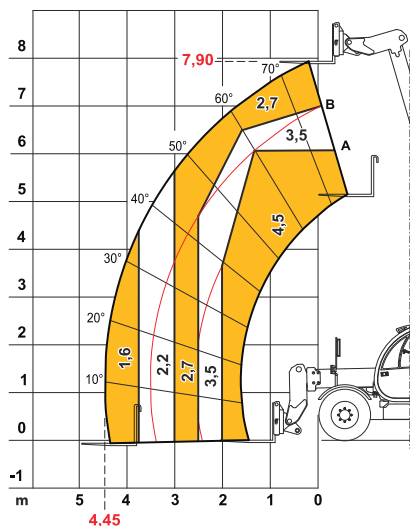
Vehicle model	SAMSON 45.8	SAMSON 75.10
A	440 mm (17.3 in)	420 mm (16.5 in)
B	1480 mm (58.3 in)	1646 mm (64.8 in)
C	2600 mm (102.4 in)	2950 mm (116.1 in)
D	860 mm (33.9 in)	1425 mm (56.1 in)
F	4000 mm (157.5 in)	4955 mm (195.1 in)
G	4940 mm (194.5 in)	6021 mm (237.0 in)
H	2460 mm (96.9 in)	2490 mm (98.0 in)
I	940 mm (37.0 in)	940 mm (37.0 in)
L	1910 mm (75.2 in)	1920 mm (75.6 in)
M	2310 mm (90.9 in)	2380 mm (93.7 in)
O	4080 mm (160.6 in)	4730 mm (186.2 in)
P	1260 mm (49.6 in)	1700 mm (66.9 in)
Q	3920 mm (154.3 in)	4400 mm (173.2 in)
T	125 mm (4.9 in)	100 mm (3.9 in)



MAX 4,5 t

500 mm

AXB1326



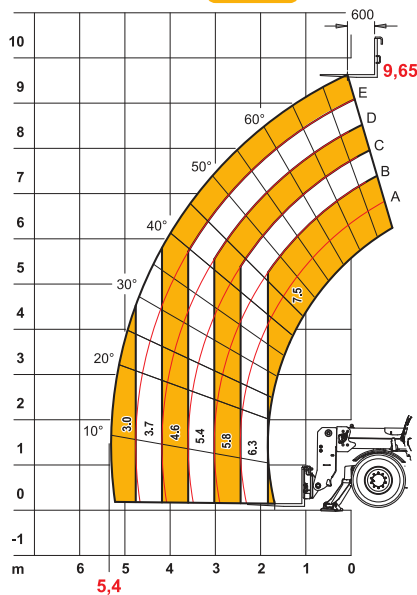
EN1459

45.8

MAX 7,5 t

600 mm

DOC10000069



EN1459

75.10