

Weber MT CR6 H

Reversible Plate Compactor



The CR 6 H is extremely popular with Kiwi contractors and civil construction companies, renowned for its balanced operating characteristics and exceptionally smooth operation. Made in Germany, this unit offers low hand-arm vibrations provide for superb ease of use and optimal comfort with an compaction force of 55 kN. The standard operating width is 590mm (expandable). An all-around enclosure and the sturdy frame provide full protection for the engine, thereby increasing operational reliability.

Key Features

- | 55kN
- | 412kg
- | Hatz Engine



PRODUCT SPECIFICATIONS	
Operating Weight	412kg
Working Width	590mm
Compaction Force	55kN
Frequency	72Hz
Engine	Hatz 1B40 Diesel Engine
Power Output	7.5 kW (10.3 HP)

CCD upgrade

Compatrol® allows you to get your surface to the exact level of desired.

Compaction - no more under-compacting, weak spots, or over compacting and wasted time.



Salesperson:

Phone:

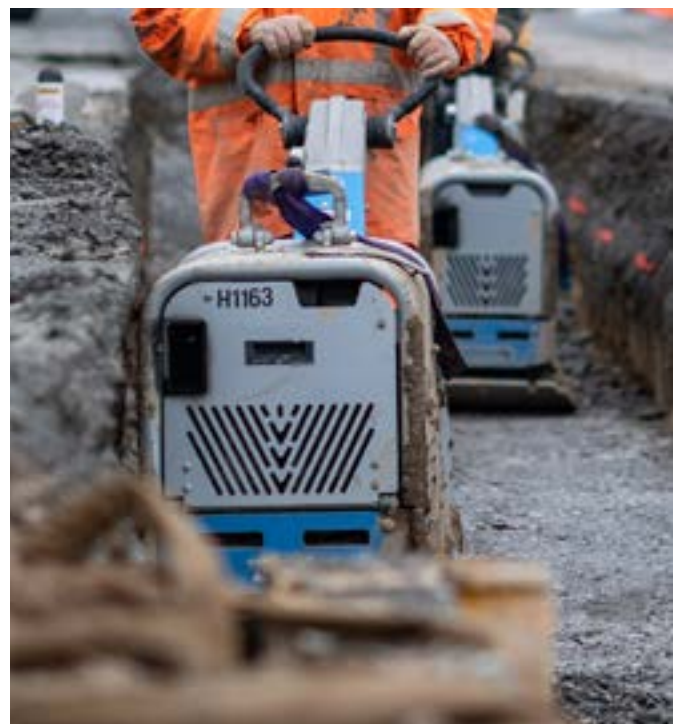
Price*: \$

Date:

*Price valid for 30 days from date of quotation.

Buy with confidence
0800 503 555 | omcpowerequipment.co.nz





Buy with confidence
0800 503 555 | omcpowerequipment.co.nz

